
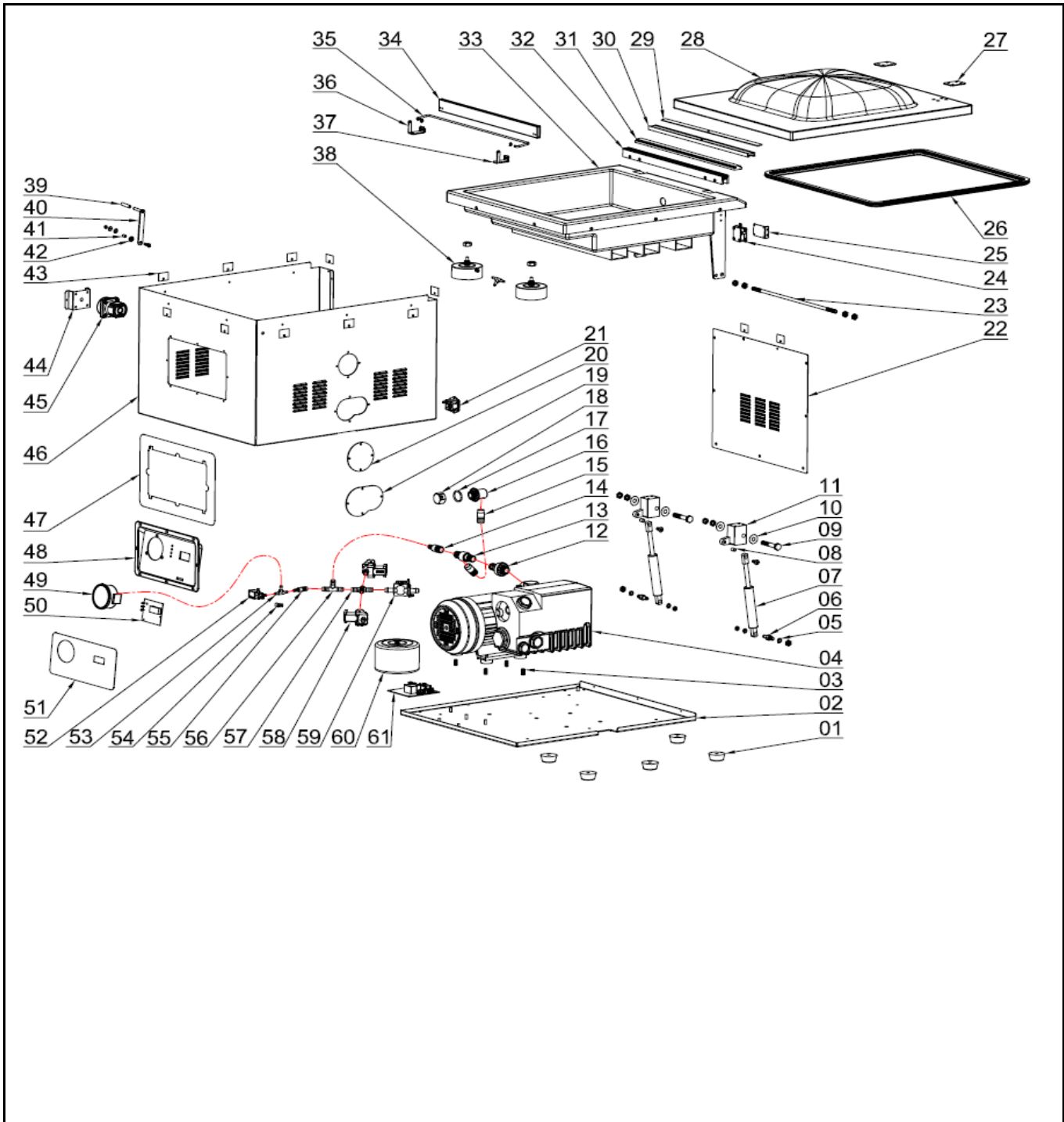



Drawing

 <p>Hendi B.V. Steenoven 21 3911 TX Rhenen The Netherlands</p>	Batch #	Appliance part#
	172490 and up	201442
	Description	
	Vacuum chamber packaging machine Profi Line 410	

Date	16-01-2019	Revision #	1.0
Revision	First Bill of Materials (BOM)		



Bill of materials (BOM)

 <p>Hendi B.V. Steenoven 21 3911 TX Rhenen The Netherlands</p>	Batch #	Appliance part#
	172490 and up	201442
	Description	
Vacuum chamber packaging machine Profi Line 410		

Date	16-01-2019	Revision #	1.0
Revision	First Bill of Materials (BOM)		


Item	Description	Part#	Quantity	Remark	Picture
1	Foot	942543	6		
2	Bottom Plate	n/a	1		
3	M8X16 screw	n/a	4		
4	Vacuum Pump	946961	1		
5	Ø8 Washer	n/a	2		
6	Gas Hinge Srew	n/a	2		
7	Gas Hinge	947364	2		
8	Gas Hinge Washer	n/a	2		
9	Hinge Bracket Screw	n/a	2		
10	Washer	n/a	2		
11	Hinge Bracket	n/a	2		
12	Vaccuum Connector	n/a	2		
13	3-Way Connector Ø18mm	n/a	1		
14	Brass Connector (Big->Small)	n/a	1		
15	Connector	n/a	1		
16	Vacuum Chamber Connector	n/a	1		
17	Gasket Vacuum Chamber Connector	n/a	1		
18	Vacuum Port Nut	n/a	1		
19	Side Cover A	n/a	1		
20	Side Cover B	n/a	1		
21	Socket C14 with Fuse	n/a	1		
22	Back Cover	n/a	1		
23	Vaccum Chamber Axle	n/a	1		
24	Microswitch Assembly	946879	1		
25	Bracket	n/a	1		
26	Gasket Lid	944950	1	Also in set 946909	
27	Vacuum Lid Hinge Cover	nss	2	Available as 946909	
28	Vacuum Lid	946909	1	Incl. items 26,27,29,30 and 31	
29	Sealing for Holder Silicone Gasket	nss	1	Available as 946909	
30	Holder Silicone Gasket	nss	1	Available as 946909	
31	Silicone Gasket	944967	1	23.5*410mm	
32	Sealing Bar Complete Assembly	944974	1	Total Length 413mm	
32A	Teflon Gasket (Tape)	942659	1	Not Shown on Exploded View	
32B	Teflon Tape Whole Roll (65mm*30m)	942666	1	Not Shown on Exploded View	
32C	Heating Wire	946916	2	Not Shown on Exploded View	
33	Vacuum Chamber	n/a	1		
34	Bracket	n/a	1		
35	Bag Holder	nss	1	Available as 946923	
36	Bag Holder Bracket (Left)	nss	1	Available as 946923	
37	Bag Holder Bracket (Right)	nss	1	Available as 946923	
37A	Bag Holder Complete Set	946923	1	Incl. items 35,36 and 37	
38	Piston (sealbar)	947005	2		
39	Silicone Tube	nss	1		
40	Lock For Lid	946978	1	Incl. Items 39, 41, 42	
41	Screw	nss	1		
42	Nut	nss	4		
43	Protective Pad for Lid	n/a	12		
44	Switch Bracket	n/a	1		
45	Switch	946930	1		
46	Housing Cover	n/a	1		
47	Control Panel Bracket	n/a	1		
48	Control Panel	n/a	1		
49	Vacuum Gauge	946817	1		
50	Control PCB	944981	1		

51	Membrane Switch Panel	946947	1		
52	Seal Bar Valve	946794	1		
53	3-Way Connector (Small)	n/a	2		
54	Mounting Pin	n/a	1		
55	2-Way Connector (Straight)	n/a	1		
56	Three-Way Connector (Big)	942505	1		
57	4-Way Connector	n/a	1		
58	Inlet Valve	942475	2		
59	Outlet Valve	942550	1		
60	Toroidal Transformer	n/a	1		
61	Main PCB	944998	1		
62	Power Cord	900680	1	Not Shown on Exploded View	
68	Product Raiser	946954	2	Not Shown on Exploded View	

n/a -> not available

nss -> not sold separately

Circuit diagram

 <p>Hendi B.V. Steenoven 21 3911 TX Rhenen The Netherlands</p>	Batch #	Appliance part#
	172490 and up	201442
	Description	
	Vacuum chamber packaging machine Profi Line 410	

Date	16-01-2019	Revision #	1.0
Revision	First Bill of Materials (BOM)		

